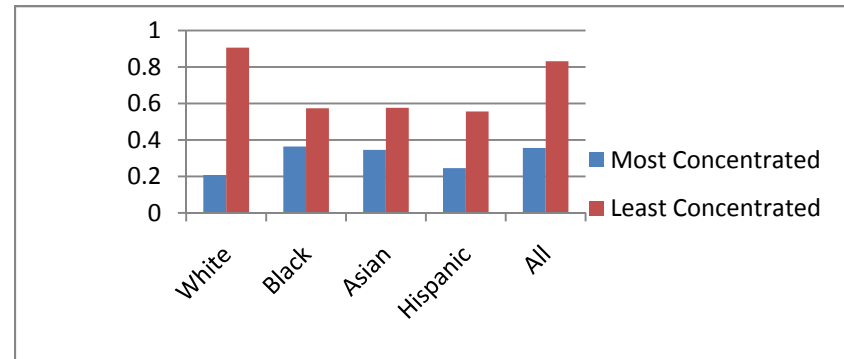


Test Scores by Racial Group on the Three MCA Tests (2010 Data)

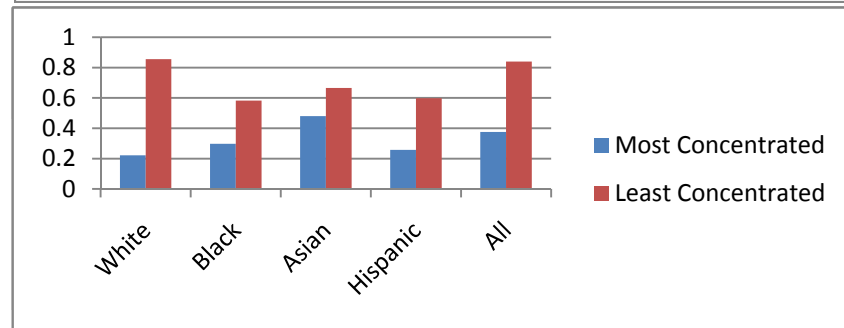
Reading

	Most Concentrated	Least Concentrated
White	20.8%	90.6%
Black	36.4%	57.4%
Asian	34.6%	57.6%
Hispanic	24.6%	55.6%
All	35.6%	83.2%



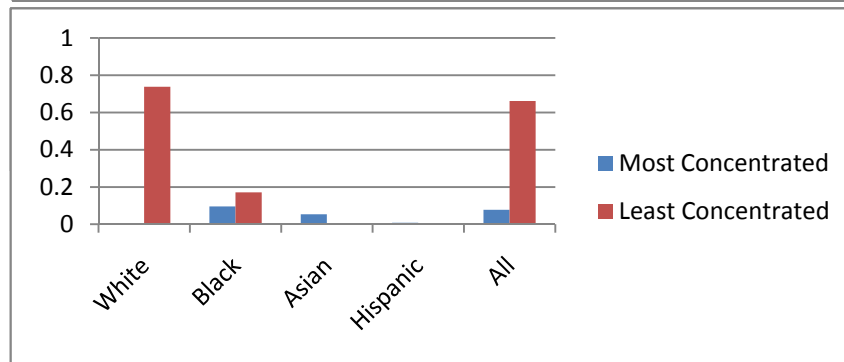
Math

	Most Concentrated	Least Concentrated
White	22.2%	85.6%
Black	29.8%	58.2%
Asian	48.0%	66.6%
Hispanic	25.8%	59.8%
All	37.6%	84.0%



Science

	Most Concentrated	Least Concentrated
White	0.0%	74.0%
Black	9.6%	17.0%
Asian	5.4%	0.0%
Hispanic	0.8%	0.0%
All	7.8%	66.0%



Average proficiency per racial group on each test for 2010

"Most Concentrated" = top 5 schools with highest concentration of students of color (96% and higher)

"Least Concentrated" = top 5 schools with lowest concentration of students of color (20+% - 40%)